



Guidelines for dolphin-watching

by

HUMPY THE HUMPBACK DOLPHIN!



1. On spotting a pod of Dolphins, first observe their direction of travel and then move accordingly.



2. Do not let the approach speed be more than 8 kmph.



3. Do not chase the dolphins.

4. Do not drive head on. Approach the pod from the side, parallel or behind. If the pod is travelling, travel parallel at the same approximate speed. Try not to separate the group. Always make sure you are parallel.



5. If the dolphins are not travelling, make sure you switch off the engine and pull up the propeller.

6. Avoid groups that have new-born (small) individuals.



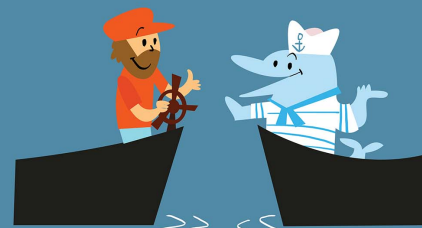
7. Observe the dolphins for not more than 20 minutes.

8. Always maintain a distance of 100 metres from a pod of dolphins.



9. In case of more than 3 boats observing the same pod, leave and come back later to ensure there is no crowding around the group.

10. When you see another boat approach, signal to it the position of dolphins and suggest an appropriate method of approach.



Empowered lives.
Resilient nations.